

# HOLOCAUST MEMORIAL MONUMENTS

A JOINT PROJECT OF THE  
CENTER FOR JEWISH ART, HEBREW UNIVERSITY OF JERUSALEM  
MILLER CENTER/FELDENKREIS PROGRAM, UNIVERSITY OF MIAMI  
INTERNATIONAL SURVEY OF JEWISH MONUMENTS



UNIVERSITY OF MIAMI  
THE SUE and LEONARD MILLER  
CENTER FOR CONTEMPORARY  
JUDAIC STUDIES



THE GEORGE FELDENKREIS  
PROGRAM IN JUDAIC STUDIES  
COLLEGE OF ARTS & SCIENCES  
UNIVERSITY OF MIAMI



## Holocaust Memorial Monuments in South Florida

### Expedition Report 2022



Samuel D. Gruber

March 2022

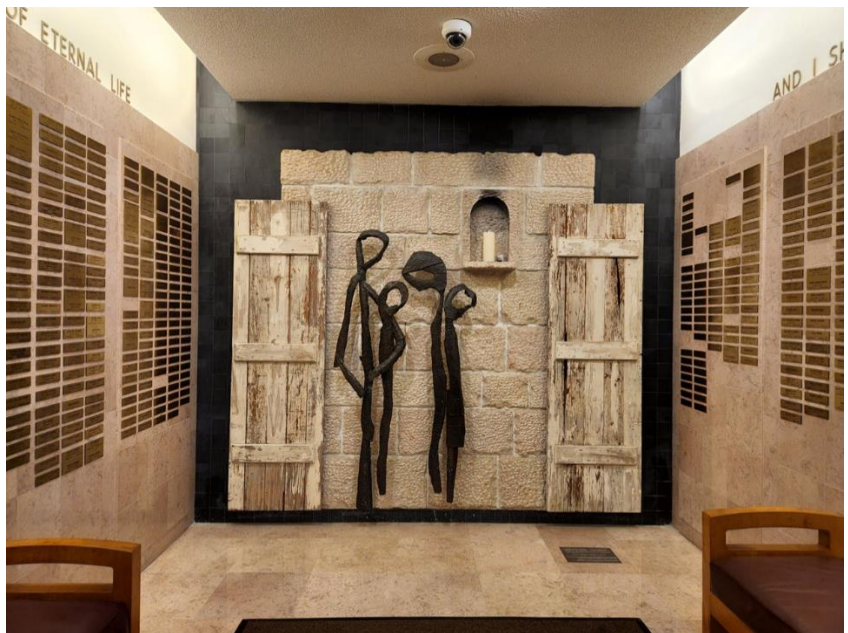
# Holocaust Memorial Monuments in South Florida

## Expedition Report 2022

This report is part of a global project designed to digitally document all Holocaust Memorial Monuments. It is a partnership between the Center for Jewish Art of the Hebrew University, Jerusalem; The Sue and Leonard Miller Center for Contemporary Judaic Studies/George Feldenkreis Program in Judaic studies, University of Miami; and the International Survey of Jewish Monuments.

This is a summary report of the two-week expedition by Samuel Gruber of ISJM.

Full documentation on the immovable Holocaust memorial monuments will be included in the HMM Database of the Bezalel Narkiss Index of Jewish Art.







## **Acknowledgements**

Samuel Gruber gratefully thanks the following who gave information about the location of memorial monuments, provided access to facilities, and information about Holocaust Memorial Monument history.

Marshall Baltuch, Beth Torah Benny Rok Campus

Mark Baranek, Director of Congregational Engagement, Temple Beth Sholom Miami Beach

Jeff Goldgrab, Chief Operating Officer, Boca Raton Synagogue

Rabbi Craig Ezring, Beth Israel, Deerfield Beach, Florida

Matthew Halprin, Executive Director, Beth Torah Benny Rok Campus

Sharon Horowitz, Executive Director, Holocaust Memorial Miami Beach

Nicole Pertierra Iglesias, The Sue and Leonard Miller center for Contemporary Judaic Studies

Jeff Jacob, Executive Director, Temple Beth El of Hollywood

Sharón Levi, Senior Director, Operations & Security. Temple Beth Am, Pinecrest, Florida

Leesa Parker, B'nai Torah

Iris Petroff Koller

Bobbi Sadow, Executive Director, Temple Beth David, Palm Beach Gardens, Florida

Lea Shani, David Prosnack JCC, Davie, Florida

Barbara S. Tobin-Forbush, President, Temple Anshei Shalom, Delray Beach. Florida

Susan Warech, Executive Director, Temple Sinai of North Dade

Rabbi Leon Weissberg

## About the Survey and the Report

This survey covers an area of three counties in Southwest Florida: Palm Beach, Broward, and Miami-Dade. This is an area that is home to a large Jewish population, with scores of active synagogues and Jewish schools, and many Jewish cemeteries. There are four Holocaust education centers and the Museum of Florida Jewish history. In the second half of the 20<sup>th</sup> century, South Florida had one of the largest communities of Holocaust survivors in North America. Many survivors and their descendants remain active in the area today.

Anecdotally it was known that the area is home to many Holocaust Memorial Monuments of many types, but these have never before been listed or systemically photographed. I am grateful to Julian Preisler who provided a substantial but still partial list of likely sites of monuments. I have been able to confirm most of Mr. Preisler's locations and have also been able to add several more. In addition, at least two monuments known previously have been removed, and at least one monument has been transferred to a new location.

The goal of this expedition was to visit as many of these sites as possible with a period of twelve days, to take high quality digital photographs and on-site measurements, and to glean some history of each monument or direction to individuals and published sources that might aid subsequent research to shed light on the monuments' histories.

In addition, whenever possible, I undertook photo documentation of buildings, cemeteries, and other artworks relevant to the study of Jewish art and architecture. These additional photos will also be included in projects of the Center for Jewish Art and the International Survey of Jewish Monuments.

The survey was carried out from March 27<sup>th</sup> through April 7, 2022. The route followed was mostly north to south. I was based one week in Boca Raton and one week in Miami.

Samuel D. Gruber  
Syracuse, NY, April 2022



## List of Documented Holocaust Memorial Monuments and Art

1. Boca Raton, Florida

Temple Beth Shalom of Boca

19140 Lyons Rd, Boca Raton, FL 33434 (Century Village)

Outdoor Monument

2. Boca Raton, Florida

Boca Raton Synagogue (Orthodox)

7900 N Montoya Cir, Boca Raton, FL 33433

Dr. Eric and Sarah Gordon Holocaust Memorial

Designer: Martin Judovits (Holocaust survivor), 2010

3. Boca Raton, Florida

B'nai Torah Congregation

6261 SW 18th St, Boca Raton, FL 33433

Holocaust memorial room

Artist: Fay Grajower sculpture, 1992

4. Boca Raton, FL

B'nai Torah Congregation

6261 SW 18th St, Boca Raton, FL 33433

Holocaust-themed stained glass windows

5. Coral Gables, Florida

Sue and Leonard Miller Center for Contemporary Judaic Studies

University of Miami, Solomon Merrick Building

5202 University Drive, Coral Gables, FL

*Homage to Janusz Korczak*, bronze sculptural frieze

Herzl Emanuel, sculptor, 1982, installed and rededicated 2006

6. Davie, Florida

David Posnack JCC, Mania and Max Nudel Holocaust Learning Center

Designer: Craig Konhauzer

Copper "Zachor" door, Laszlo Buday, artist 1924-2017

*The Fifth Son*, marble sculpture by Susan Miller

Stained glass window

7. Deerfield Beach, Florida

Young Israel of Deerfield Beach

202 Century Blvd, Century Village East

Outside monument, ca. 2004

8. Deerfield Beach, Florida

Temple Beth Israel of Deerfield (Conservative)

South Military Trail, Deerfield Beach, Florida, 33442 USA

[Holocaust Monument, 1998](#)

9. Delray Beach, Florida

Temple Anshei Shalom (Conservative)

7099 West Atlantic Avenue, Delray Beach, FL 33446

[Holocaust memorial](#)

10. Fort Lauderdale, Florida

Temple Bat Yam of East Fort Lauderdale

5151 NE 14th Terrace, Fort Lauderdale, FL 33334

[Inside Holocaust Memorial installation w/ scroll, Wolf Kahn sculpture, and milkcan](#)

11. Hollywood, Florida

Beth David Memorial Gardens / Levitt Weinstein Jewish Funeral Home & Cemetery

3201 N 72nd Ave, Hollywood, FL 33024

[Holocaust Memorial Monument](#)

12. Lantana, Florida

Palm Beach Memorial Gardens

3691 N Seacrest Blvd, Lantana, FL 33462

[Free standing Holocaust Monument](#)

13. Miami Beach, Florida

[Holocaust Memorial Miami Beach](#)

Kenneth Treister, artist/architect

14. Miami Beach, Florida

Temple Beth Shalom Miami Beach

4144 Chase Avenue< Miami Beach, FL 33140

[Holocaust Memorial artwork \(textile\)](#)

15. Miami Beach, Florida

Jewish Museum of Florida

Former Beth Jacob Synagogue

301 Washington Ave, Miami Beach, FL 33139

[Tribute to Anne Frank](#)

16. Miami Beach, Florida

Luna Mar Condominium, 1545 Jefferson Avenue

Formerly Temple Beth Raphael (1966)

[Original Holocaust Memorial façade destroyed](#)

17. Miami Beach, Florida.  
Beth Israel Congregation  
770 W 40th St, Miami Beach, FL 33140  
Holocaust memorial monument (ca. 1965) has been removed
18. North Lauderdale, Florida  
Star of David Memorial Gardens Cemetery & Funeral Chapel  
7701 Bailey Rd, North Lauderdale, FL 33068  
Plaque in recessed area of tomb wall
19. North Lauderdale, Florida  
Bailey Memorial Cemetery  
7801 Bailey Rd, North Lauderdale, FL 33068  
Free standing monument next to gazebo
20. North Miami, Florida  
Shalom Memorial Gardens  
15800 NE 18th Ave, North Miami Beach, FL 33162  
Holocaust Memorial Monument
21. North Miami Beach, FL  
Beth Torah Benny Rok Campus  
20350 NE 26th Ave,  
North Miami Beach, FL 33180  
Holocaust Memorial Wall  
Holocaust Memorial Wall in Sanctuary  
Laszlo Buday, artist 1924-2017
- 22 North Miami Beach Fl  
Temple Sinai of North Dade  
18801 NE 22<sup>nd</sup> Avenue, North Miami Beach Fl 33180  
*Children ...the Pillars of Our Future* Holocaust memorial and garden, 2000  
Designer: Donnie el Berman of D el B Design Studio (NY, Florida, Jerusalem)
23. Palm Beach Gardens, Florida  
Temple Beth David  
4657 Hood Road, Palm Beach Gardens, Florida 33418  
Holocaust Torah
24. Pinecrest, Florida  
Temple Beth Am  
5950 North Kendall Drive, Pinecrest, Florida 33156  
Holocaust Memorial Sculpture "Zachor" by Zammy Migdal (2007)

25. Southwest Ranches, FL  
Menorah Gardens Cemetery  
21100 Griffin Rd, Southwest Ranches, FL 33332  
[Holocaust Memorial Monument, 2008](#)

26. West Palm Beach, FL  
Temple Beth El  
2815 N Flagler Dr, West Palm Beach, FL 33407  
Interior architecture  
[Holocaust Memorial and Garden](#)

27. West Palm Beach, FL  
Temple Israel  
1901 N Flagler Dr, West Palm Beach, FL 33407  
[Holocaust Torah](#)



Miami Beach, Florida. Holocaust Memorial Miami Beach. Artist/designer Kenneth Treister, 1990.

## Holocaust Memorials in Southeast Florida: An Overview

The Holocaust Monument Miami Beach is the most prominent and the preeminent Holocaust memorial monument in South Florida, and perhaps in the entire United States. The monument is exceptional in many aspects. Its size, and the integration of architecture, landscape architecture, sculpture, text, and photos create an entire immersive experience for the visitor. The combination of elements calls forth physical and emotional responses and provides historical information to encourage intellectual contemplation and discussion.



Besides the monument itself, is an established and successful education and outreach program ensures the upkeep of the memorial, and adapts the education presentation to changing audiences. A professional staff led by veteran Holocaust education Sharon Horovitz sets a high standard for other place-based Holocaust education programs.

Since the opening of the Holocaust Monument Miami Beach in 1990, two earlier memorial monuments in Miami Beach founded by Survivors in the 1960s have been removed and presumably destroyed. One of these, outside of Beth Israel Congregation, was a large metal sculptural memorial monument in the shape of a tree or lit flame set above an inscribed metal open scroll, installed on a stone base in the shape of a Magen David. The other was the synagogue Beth Raphael, founded by survivors, where the entire building was intended as a

memorial. The facade was decorated with a large commemorative mural, and the lower part of the façade held many individual memorial plaques in Hebrew, Yiddish, and English. This synagogue has been converted into a condominium and all the original decoration was removed.



Top: Miami Beach Florida, Beth Israel Congregation, with and without memorial monument

Bottom: Miami Beach Florida, Former Temple Beth Raphael, 1545 Jefferson Avenue, as a memorial and present-day, as apartments.

In addition, there are several Holocaust Documentation and Education Centers in the region. They are:

Holocaust Documentation and Education Center in Dania Beach - <https://hdec.org/>

The Holocaust Learning Center at the David Posnack JCC – <https://www.dpjcc.org/activism-advocacy/mania-and-max-nudel-holocaust-learning-center/>

The Craig and Barbara Weiner Holocaust Reflection and Resource Center <http://holocausteducationfund.com/holocaust-museum.html>



Miami Beach, Florida. Holocaust Memorial Miami Beach. Artist/designer Kenneth Treister, 1990.

Many synagogues in the area have built outdoor Holocaust memorials. One type of memorial is free-standing and placed very near then front of the synagogue. These are mostly located at synagogues which have had many Holocaust survivors as congregants. Some memorials were sponsored by survivors or their families and memorialize murdered individuals or extended families as well as serving for memorials for all the Jewish Holocaust victims.

These monuments are in the tradition of Jewish gravestones, though sometimes consisting of multiple inscribed slabs which contain memorial texts and, as in the case of the Boca Raton Synagogue, extensive historical information.

Minimally, these monuments might list the names of the major concentration and death camps, as at both Temple Beth Israel and Young Israel, both in Deerfield Beach. The memorial at

Beth Shalom in Boca Raton includes a map with the names of many ghettos and killing centers.

These monuments use just a few symbols and contain little other art. Beth Shalom of Boca Raton has a design with a tilted Magen David (almost identical to a memorial in Burlington, Vermont and like a memorial in Columbia, South Carolina) on which is inscribed the exhortation “Zachor” (Remember). The stone pieces at Beth Israel in Deerfield Beach are arranged to create a void in the shape of a Magen David (very similar to the partisans’ memorial at Yad Vashem in Jerusalem). The *matzevah* type memorial at the Young Israel of Deerfield Beach is pierced by a hole in the shape of Magen David, in which is inscribed “Jude,” as if it were a yellow star badge. These two memorials erected a decade apart at neighboring Conservative and Orthodox synagogues are a two-minute walk from each other.



Boca Raton, Florida, Temple Beth Shalom of Boca (Century Village). “Zachor” Memorial Monument



Top: **Young Israel of Deerfield Beach, Deerfield Beach, Florida.**  
Holocaust Memorial monument, after 2004

Bottom: **Temple Beth Israel of Deerfield, Deerfield Baech, Florida.**  
Holocaust memorial monument, 1998



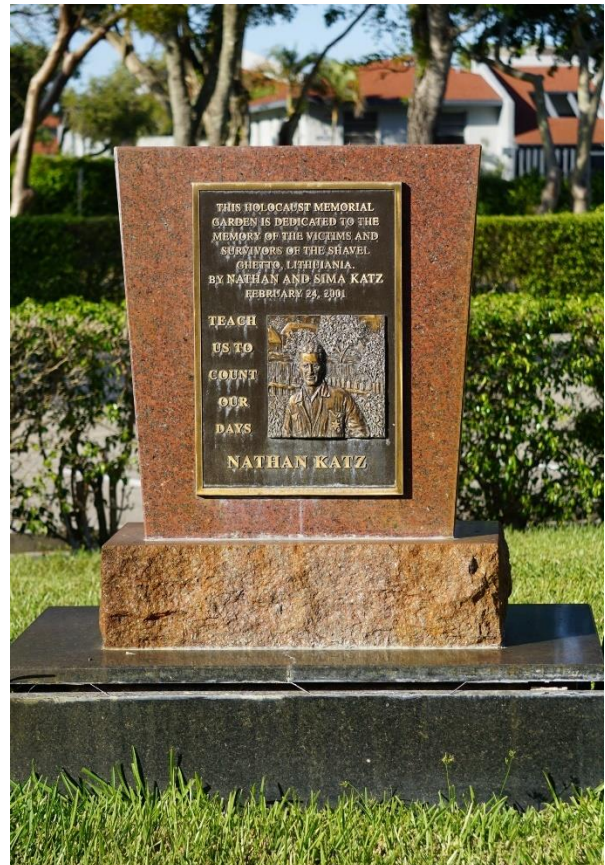
## Boca Synagogue, Boca Raton

A more complex memorial is erected outside the Boca Raton Synagogue. The Dr. Eric and Sarah Gordon Holocaust Memorial, dedicated in 2010, was designed by Holocaust survivor Martin Judovits. The expansive memorial includes two large inscribed *matzevah*-stele type stone on high bases which frame an entrance into a paved memorial space with a central bench and a perimeter defined by a low wall that carries six tall pillars inscribed with names of Holocaust victims and survivors. The backs of these pillars are curved and appear from the rear as columns on which are inscribed maps, historical texts, and the exhortation “Zachor, in sacred memory of the 6,000,000 who perished during the Holocaust.”



## Temple Anshe Shalom, Delray Beach,

On a grassy lawn between the main parking area and the synagogue building of Temple Anshe Shalom in Delray Beach is a group of memorials. The main monument is a hexagonal granite drum set on a low circular brick base. From this rises an open metal work spire culminated in a Magen David. On the sides of the drum are various memorial inscriptions and attached bronze plaques. Nearby are two benches with memorial plaques. A separate stele-type monument dedicates the entire Holocaust Memorial Garden especially to the victims of the ghetto of Shavel, Lithuania.



**Temple Sinai of North Dade, North Miami Beach, Florida.**

The Holocaust memorial monument Temple Sinai of North Dade in North Miami Beach is located in an open wooded area behind the main sanctuary building. There used to be an active religious school at the Temple and there is still a pre-school on the premises. The monument especially memorialized the children killed in the Holocaust, and children of the Temple school participated in the construction which was designed and led by Donnie el Berman of D el B Design Studio. The inscriptions celebrate children as "the Pillars of Our Future." Six semi-circular glass columns surround a gold orb. The glass is etched with scores of images and texts which in a piecemeal way relate Holocaust history.

*Children ...the Pillars of Our Future* Holocaust memorial and garden, 2000

Designer: Donnie el Berman of D el B Design Studio (NY, Florida, Jerusalem).



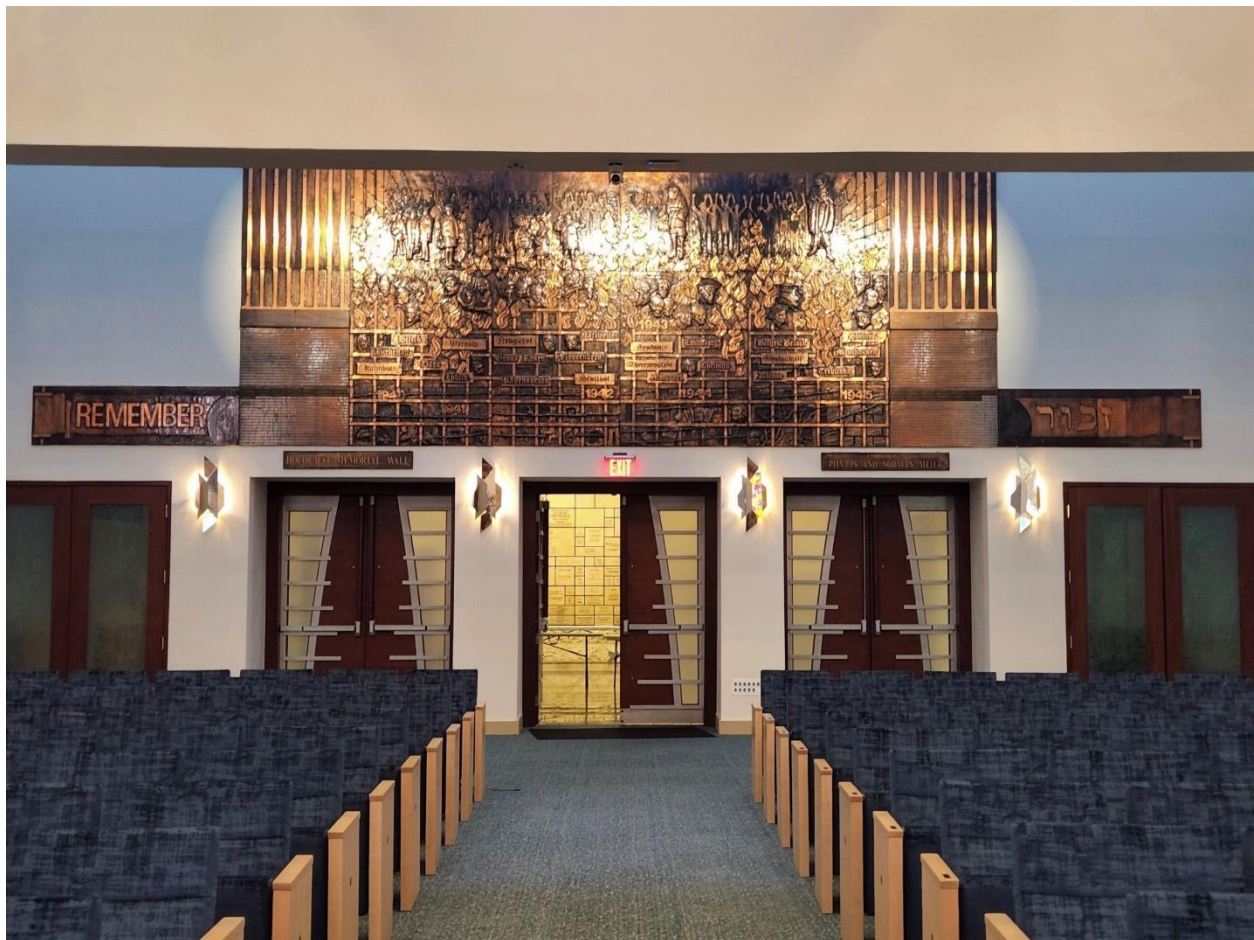
**Temple Beth El**  
**West Palm Beach, Florida**



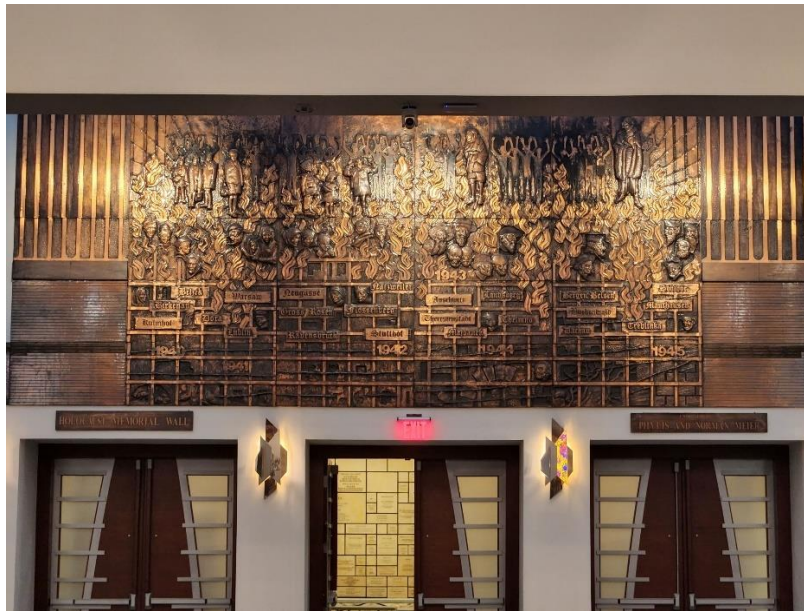
## Synagogue Memorials by Artists

Some synagogues have commissioned and installed Holocaust memorials that are works of art. These include installations within the buildings at the Bnai Torah Benny Rok campus in North Miami Beach and B'nai Torah Congregation in Boca Raton, and as outdoor sculpture at Temple Beth Am in Pinecrest. These works are by professional artists and have unique designs. The circumstances of these commissions and the level of artist-congregation collaboration is not yet known. The works vary greatly.

Artworks are also found at the Holocaust Learning Center at the David Posnack JCC in Davie, where a commemorative metalwork door, a large stained-glass window, and a free-standing marble sculpture are all on view.



North Miami Beach, Florida. Beth Torah Benny Rok Campus  
Holocaust Memorial Wall. Laszlo Buday, artist, 1980s.

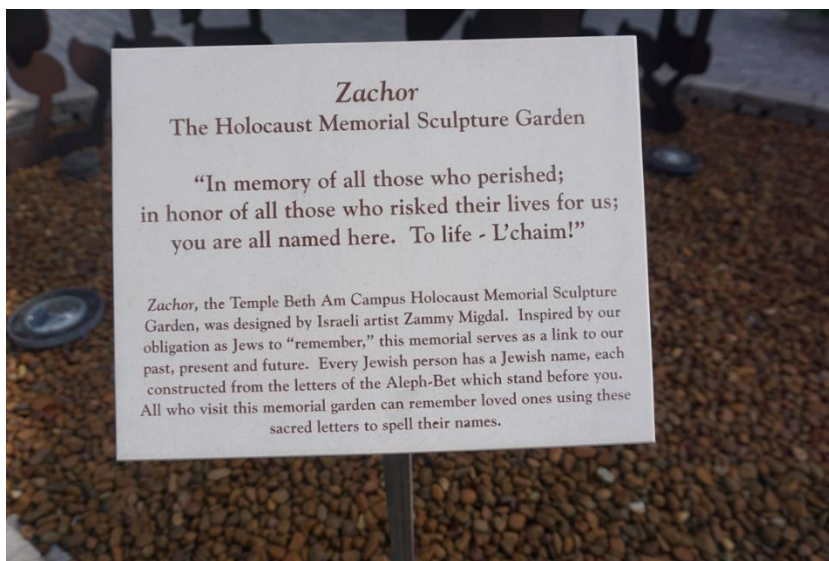


North Miami Beach, Florida. Beth Torah Benny Rok Campus  
Holocaust Memorial Wall. Laszlo Buday, artist, 1980s.



Boca Raton, Florida. B'nai Torah Congregation. Holocaust memorial. Sculpture by Fay Grajower, 1992

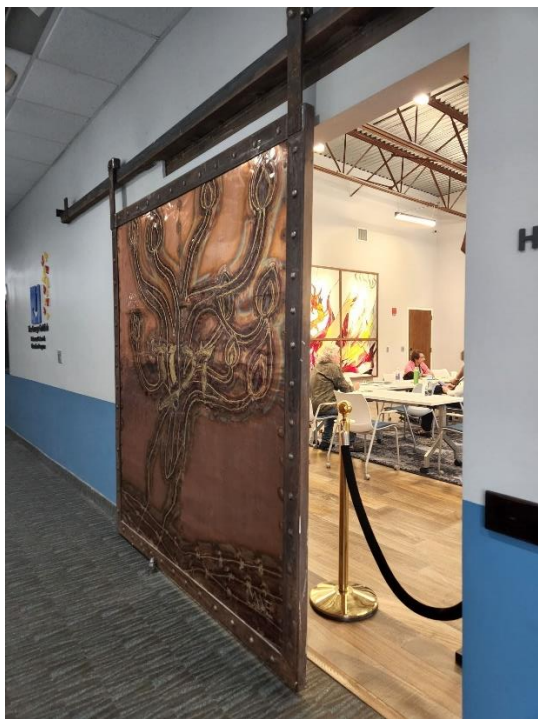




Pinecrest, Florida. Temple Beth Am. Holocaust Memorial Sculpture "Zachor" by Zammy Migdal (2007)



Davie, Florida, David Posnack JCC, Mania and Max Nudel Holocaust Learning Center, "Zachor" door, Laszlo Buday, artist.



Davie, Florida, David Posnack JCC, Mania and Max Nudel Holocaust Learning Center.  
 Top left: "Zachor" door, Laszlo Buday, artist. Top right: *The Fifth Son*, marble sculpture by Susan Miller.  
 Bottom: Stained glass re-installation.

## Cemetery Monuments

The survey identified several cemeteries with prominent free-standing Holocaust memorial monuments. These were mostly variations of the *matzevah*-stele type with different arrangements of polished gray inscribed granite slabs. The inscriptions provide a general commemoration of all Jewish victims of the Holocaust, but some memorial monuments, such as that at the Beth David Memorial Gardens in

Hollywood is also associated with individuals and individual graves. A “second generation survivor” is buried at the memorial which appears to have been designed by her brother, Percy Peretz Kaye, and erected in 1986.

Two of the *matzevah*-stele cemetery monuments have illustrations engraved into the stone beneath the inscriptions. One of these, the monument at Beth David Memorial Gardens in Hollywood mentioned above has on one side a design that includes flames around a tree with most trunks cut, but some still growing. Arms reach from the flames and bear a concentration camp number. The monument design is titled “The Phoenix Tree.” Presumably the tattoo number is that of the artist’s parent.

Another monument at the Menorah Gardens Cemetery in Southwest Ranches, is an illustration of the entrance to Birkenau. This memorial is of special interest in that the inscription implies that local participants in the March of the Living of 1988 brought back soil and ashes from Auschwitz-Birkenau and buried them here.

The cemetery monument at Shalom Memorial Gardens in North Miami is much larger and consists of a large area of low walls in the shape of a Magen David. The spaces between the walls are set up as planters, but it is not known if they have been, or still are used for flowers or other plants. A unique carved marble relief slab by a still unidentified artist is the center point of this memorial. The composition of the relief uses many familiar iconographic themes.



North Lauderdale, Florida.  
Bailey Memorial Cemetery.  
Free standing monument next to gazebo.



Southwest Ranches, Florida, Menorah Gardens Cemetery.  
Holocaust Memorial Monument, 2008.



Hollywood, Florida. Beth David Memorial Gardens.  
Holocaust memorial monument designed by Percy Peretz, 1986.



Latana, Florida, Palm Beach Memorial Gardens.  
Free standing Holocaust memorial monument.



North Lauderdale, Florida, Star of David Memorial Gardens Cemetery.  
Plaque in recessed area of tomb wall.



North Miami, Florida. Shalom Memorial Gardens, Holocaust Memorial. Artist unknown.

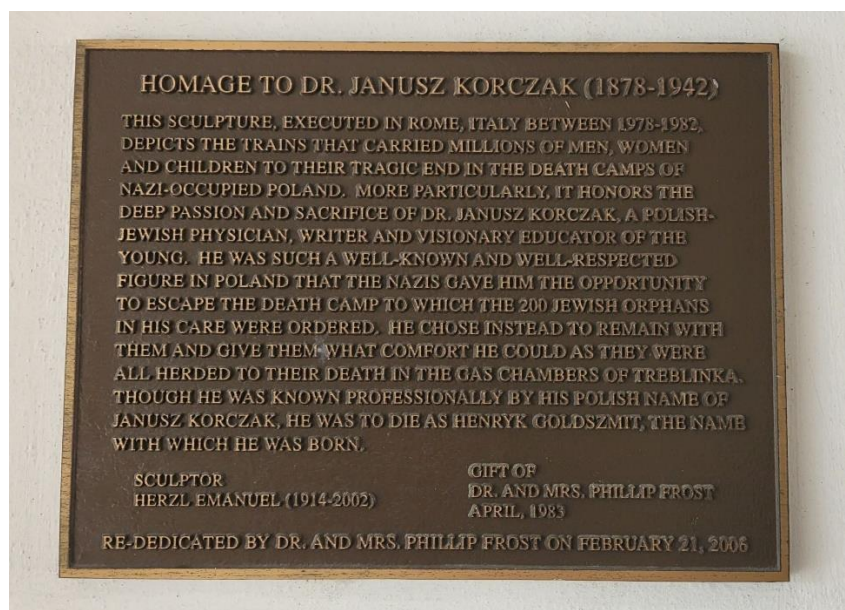
## Memorials to Individual “Holocaust Heroes”

We found two memorials to individuals whose stories have become emblematic of the Holocaust in its entirety.

### Janusz Korczak

In Coral Gables, at the University of Miami, a large bronze relief by American-Jewish artist Herzl Emanuel, was installed in 2006 at the Solomon Merrick Building, which houses the Sue and Leonard Miller Center for Contemporary Judaic Studies. The relief, titled “Homage to Janusz Korczak, had been donated to the university earlier but had not been displayed. Now the artwork is very visible, and there is a plaque the provides information on who Korczak was and how he and the orphans under his charge were deport from Warsaw and killed in Treblinka.

Coral Gables, Florida  
University of Miami  
Solomon Merrick Building,  
*Homage to Janusz Korczak*,  
Herzl Emanuel, sculptor,  
1982, installed and  
rededicated 2006

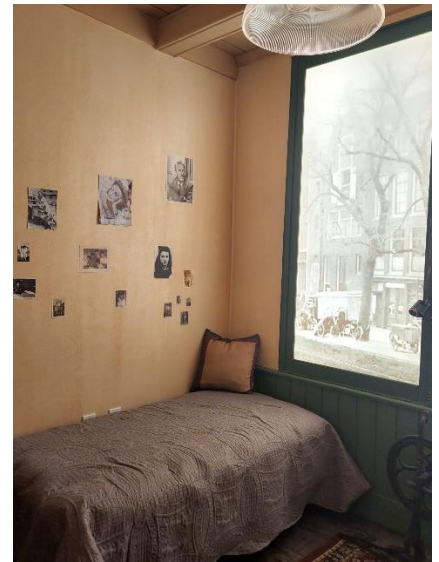


## Anne Frank

Anne Frank is remembered in a small “tombstone” type memorial in front of the Jewish Museum of Florida in Miami Beach, the former Beth Jacob Congregation. The exact meaning of the inscription is unclear, it says in three inscribed lines: “Memory Lane / In Tribute to Anne Frank / 5740.” The memorial seems to part of a larger series of “memory Lane” markers. The number 5740 may relate to the series, or it may be the Hebrew date for 1979.



Anne Frank is also remembered at the Mania and Max Nudel Holocaust Learning Center at the David Posnack JCC in David, Florida, where some sense of the Frank's hidden apartment in Amsterdam is suggested in the exhibition. Behind a bookcase a door opens to a narrow stairway which leads to a small bedroom, meant to recall Anne's life in hiding.



Outside, but also part of the Holocaust Learning Center is a memorial garden with the sculpture "Am Yisrael Chai" by Susan Miller.

## Holocaust Torahs and Movable Memorials

Several synagogues without immovable memorial monuments commemorate the Holocaust as owners or stewards of “Holocaust Torahs,” Holy scrolls that were rescued either by refugees fleeing from Europe, or which were recovered after the destruction of communities. Most “Holocaust Torahs” or “Memorial Scrolls” fall into the latter category and have been supplied on loan to congregations from the Memorial Scrolls Foundation in London. During the Communist period, over 1,000 Czech scrolls which has been confiscated from Jewish communities during the Holocaust were “rescued” and moved to the Westminster Synagogue in London where the foundation was established.

Some of these Torah scrolls have been repaired and deemed “kosher” for use, and these often occupy places of honor within a congregation’s Torah ark where they are often displayed in distinctive mantles. This is the case in at Beth David Congregation in Palm Beach Gardens and Temple Israel in West Palm Beach.



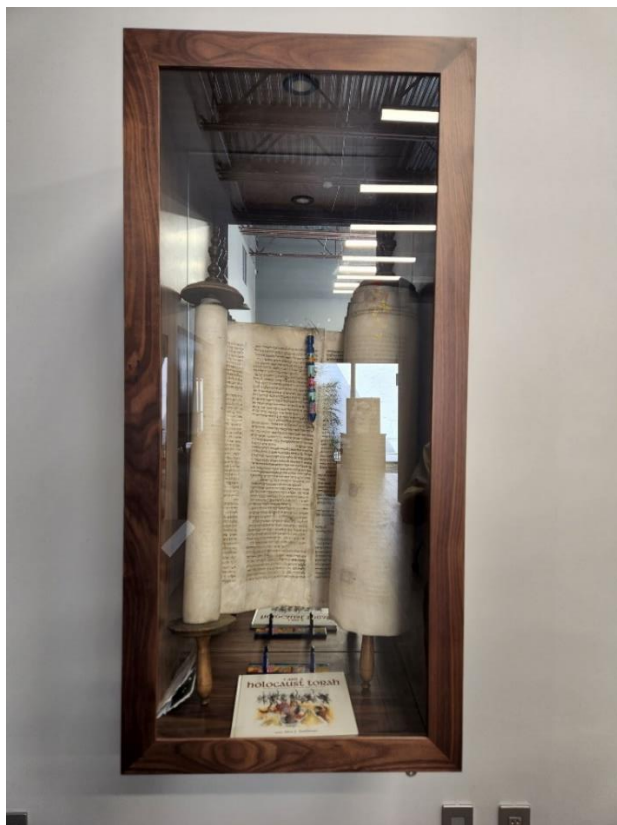
Another “Holocaust Torah” is used the Temple Israel in Palm Beach, where the torah mantle is decorated with a Holocaust-era yellow star.



Other scrolls too damaged to be used again in prayer or study, have been repurposed as memorials. In B'nai Torah Congregation in Boca Raton and Temple Beth Yam in East Fort Lauderdale these memorial scrolls play a central part in permanent memorial installations. Other Czech Memorial Scrolls are on view at the Holocaust Learning Center in Davie and at B'nai Torah Congregation n Boca Raton, set across the memorial room from the sculpture by Faye Grajower.

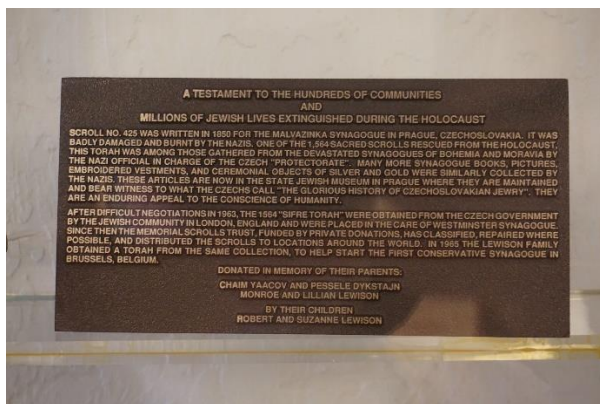


Fort Lauderdale, Florida, Temple Bat Yam of East Fort Lauderdale. Holocaust memorial installation.



Holocaust Torah from Ivanovice, Czech Republic.

Mania and Max Nudel Holocaust Learning Center at the David Posnack JCC in Davie, Florida



Holocaust Torah from the Malvazinka Synagogue in Prague.

B'nai Torah Congregation  
Boca Raton, Florida



### Smaller Works of Art

Smaller art works that commemorate or represent different aspects of the Holocaust in are on display in many synagogues. While these will not be entered into the Holocaust memorial Monument database, they are important to note. That fact that they are small, and movable makes them more ephemeral and their future location and use less certain.

At Temple Bet Yam of East Lauderdale, a small bronze sculpture of an American soldier carrying a concentration camp survivor was donated by the artist Wolf Kahn, a local jeweler and sculptor. (not to be confused with the more famous painter of he same name). The sculptor forms part of the shrine-like Holocaust memorial installation again the entrance wall of the sanctuary that include a Holocaust Torah from Moravia in the Czech Republic.

At Beth David of Palm Beach Gardens there is small version of the sculpture *Children of the Kindertransport* by Frank Meisler. This a small-scale version of his sculpture placed at the Liverpool Street Station, London, in 2006. The small version is kept in a glass case with other synagogue art and memorabilia.



At Temple Beth Shalom in Miami Beach, an important and distinctive synagogue built in the 1950s, there is no obvious Holocaust memorial, even though there are several works of modern sculpture outside the building and that the congregation owns and displays an impressive collection of prints and other work by Jewish artists.

Still, there is a framed hand quilted artwork by Flo Moss, with the large words “Never Again” built around a Holocaust-era yellow star. This is mounted close to the chapel and sanctuary.

